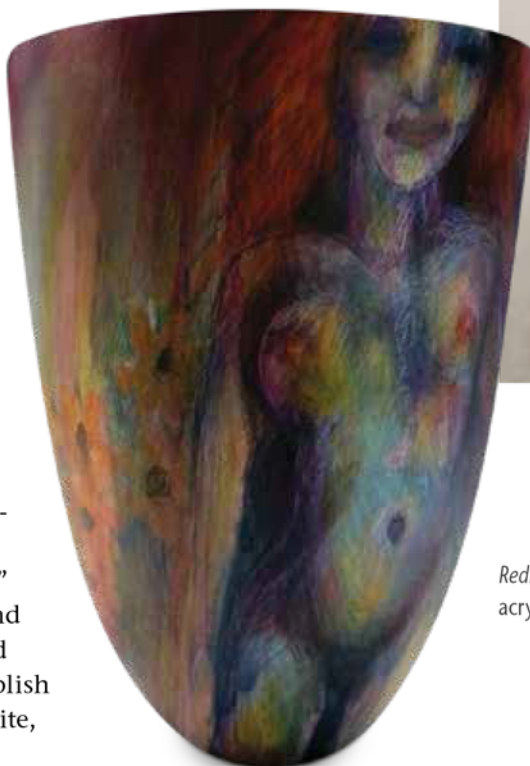


Carol and Mark Hall, Pennsylvania

In our studio, White Light Productions, Mark and I have created jewelry, art, and furniture for thirty-two years. Five years ago, we started exploring woodturning. Mark turns and I embellish with carving, pyrography, acrylic paint, and colored pencils. We have developed a surface preparation technique that allows acrylic paint to flow freely across the surface of wood, like watercolors. I rely on heat lamps and the right combination of materials to get a colorful, filmy layering of colors. I seal the wood surface with shellac, then degloss before painting.

Story-telling is an important part of our work, inspired by tarot cards and mythology. The grain and knots in each individual form drives the design and becomes an important part of the imagery. The story moves all around the piece, including on the bottom. Working in various disciplines is invigorating, but there is a clear design thread that connects all of our art. For us, the medium is not the message.

We have been traveling to clubs and symposia, presenting advanced embellishing techniques in my demo, "Beyond Brown and Round," which includes fun hacks and creative techniques that lead to superior results. I also publish articles and tips on my website, thecarolhall.com. ▶



Full Moon, 2017, Holly, acrylic paint, pyrography, 7" x 5" (18cm x 13cm)

Redhead, 2018, Spalted maple, colored pencil, acrylic paint, 6" x 5" (15cm x 13cm)

Fish or Fowl (three views), 2017, Spalted maple, acrylic paint, piercing, pyrography, 6" x 5" (15cm x 13cm)

